



JULIAN OWEN ASSOCIATES
ARCHITECTS

6 Cumberland Avenue
Beeston, Nottingham
NG9 4DH

t 0115 922 9831
f 0115 922 4616
e enquiries@julianowen.co.uk

www.julianowen.co.uk





Extensions in Chilwell, Beeston and Arnold, Nottingham

JULIAN OWEN ASSOCIATES
ARCHITECTS

6 Cumberland Avenue
Beeston, Nottingham
NG9 4DH

t 0115 922 9831
f 0115 922 4616
e enquiries@julianowen.co.uk

www.julianowen.co.uk





Ground Floor Extension, Chilwell, Nottingham



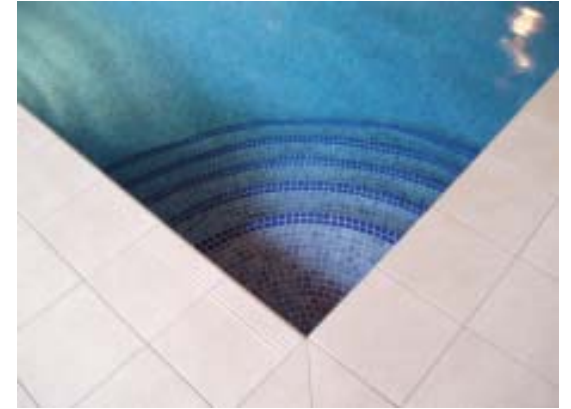
JULIAN OWEN ASSOCIATES
ARCHITECTS

6 Cumberland Avenue
Beeston, Nottingham
NG9 4DH

t 0115 922 9831
f 0115 922 4616
e enquiries@julianowen.co.uk

www.julianowen.co.uk





Swimming Pool Extension, Hickling Pastures

JULIAN OWEN ASSOCIATES
ARCHITECTS

6 Cumberland Avenue
Beeston, Nottingham
NG9 4DH

t 0115 922 9831
f 0115 922 4616
e enquiries@julianowen.co.uk

www.julianowen.co.uk





Two Storey Extension, Mapperley, Nottingham

JULIAN OWEN ASSOCIATES
ARCHITECTS

6 Cumberland Avenue
Beeston, Nottingham
NG9 4DH

t 0115 922 9831
f 0115 922 4616
e enquiries@julianowen.co.uk

www.julianowen.co.uk





Before from Rear



Before from Front



After from Front



After from Rear



Extension to Cottage, Keyworth

JULIAN OWEN ASSOCIATES
ARCHITECTS

6 Cumberland Avenue
Beeston, Nottingham
NG9 4DH

t 0115 922 9831
f 0115 922 4616
e enquiries@julianowen.co.uk

www.julianowen.co.uk





Before



During



After

Two Storey Extension, Nuthall Nottingham

JULIAN OWEN ASSOCIATES
ARCHITECTS

6 Cumberland Avenue
Beeston, Nottingham
NG9 4DH

t 0115 922 9831
f 0115 922 4616
e enquiries@julianowen.co.uk

www.julianowen.co.uk





Front of House, Before

Extensions, Loft Conversion and Remodelling of a House in Edwalton, Nottingham

JULIAN OWEN ASSOCIATES
ARCHITECTS

6 Cumberland Avenue
Beeston, Nottingham
NG9 4DH

t 0115 922 9831
f 0115 922 4616
e enquiries@julianowen.co.uk

www.julianowen.co.uk





Extensions to House in Toton, Nottingham

JULIAN OWEN ASSOCIATES
ARCHITECTS

6 Cumberland Avenue
Beeston, Nottingham
NG9 4DH

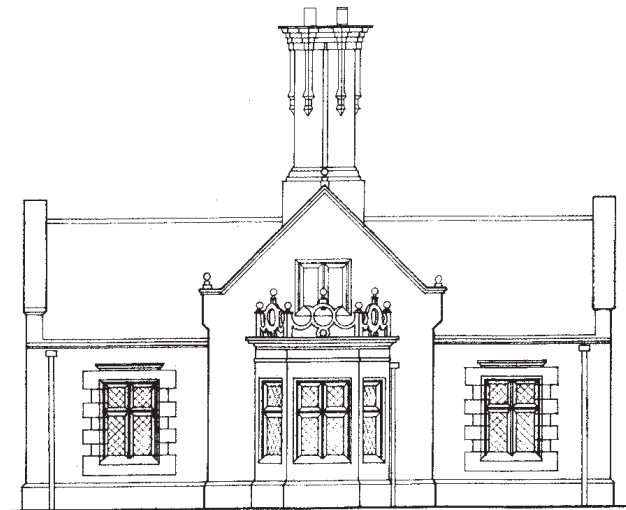
t 0115 922 9831
f 0115 922 4616
e enquiries@julianowen.co.uk

www.julianowen.co.uk





**Refurbishment and Attic Conversion of Grade II
Listed Lodge, Rufford, Notts**



JULIAN OWEN ASSOCIATES
ARCHITECTS

6 Cumberland Avenue
Beeston, Nottingham
NG9 4DH

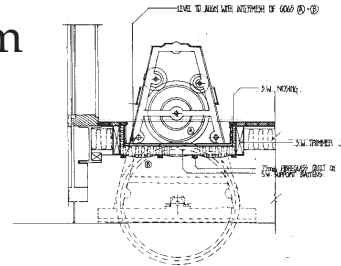
t 0115 922 9831
f 0115 922 4616
e enquiries@julianowen.co.uk

www.julianowen.co.uk





Entrance to Wollaton Hall, Nottingham



JULIAN OWEN ASSOCIATES
ARCHITECTS

6 Cumberland Avenue
Beeston, Nottingham
NG9 4DH

t 0115 922 9831
f 0115 922 4616
e enquiries@julianowen.co.uk

www.julianowen.co.uk

